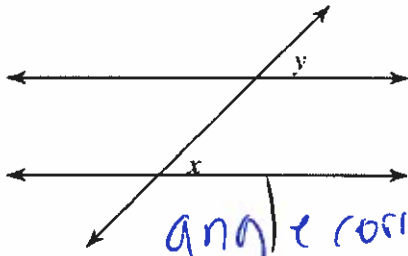


Nom : _____

Date : _____

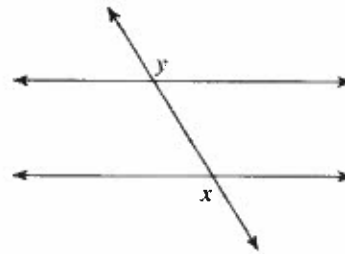
A) Identifie chaque pair d'angles comme correspondants, alterne-interne, alterne externe ou supplémentaire.

1)



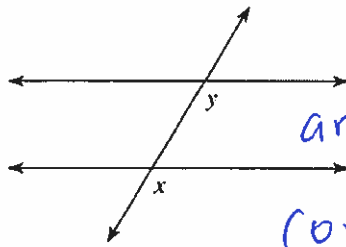
angle correspondant

2)



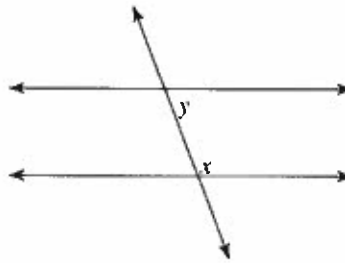
angle alterne externe

3)



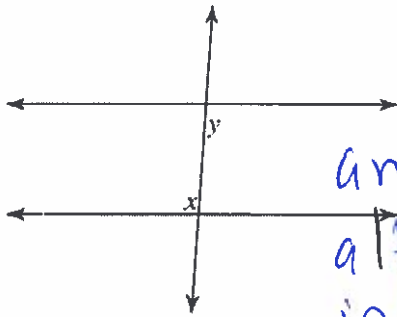
angle correspondant

4)



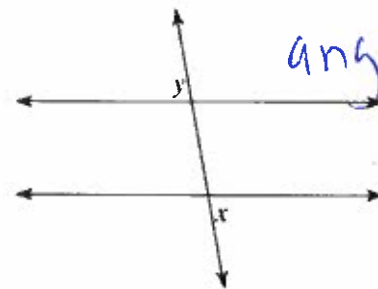
angle supplémentaire

5)



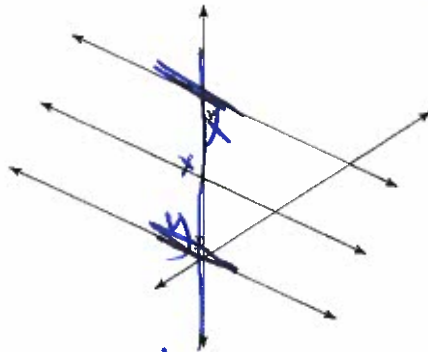
angle alterne interne

6)



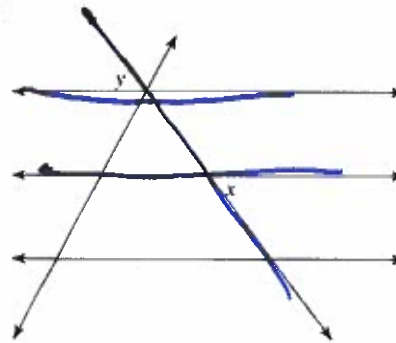
angle alterne externe

7)



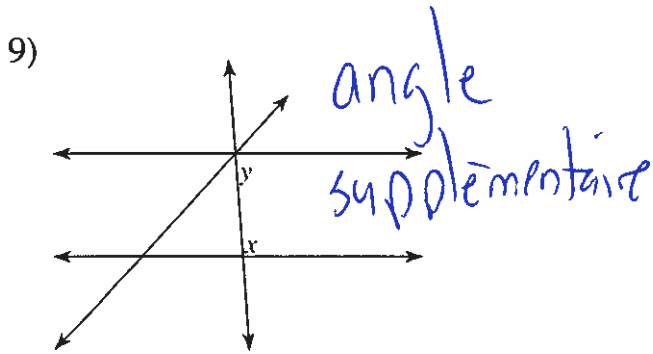
angle alterne interne

8)

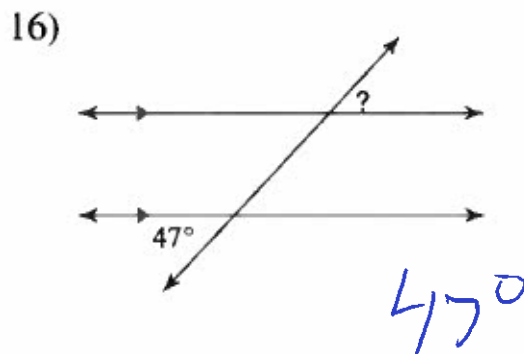
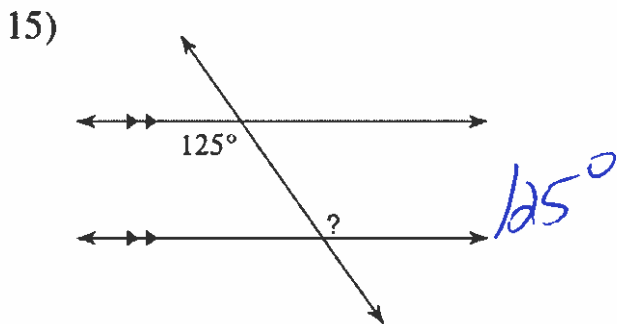
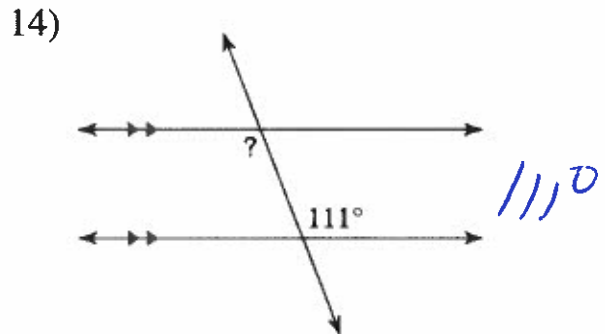
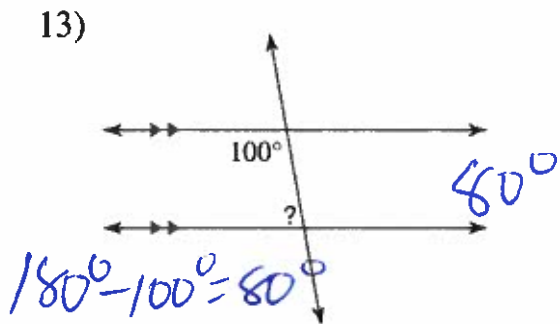
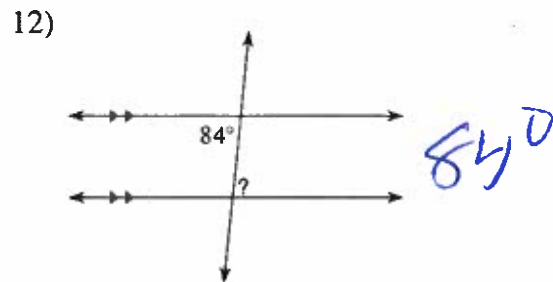
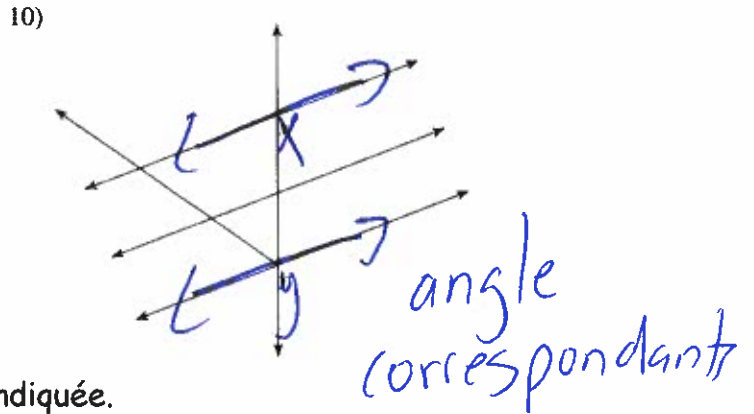
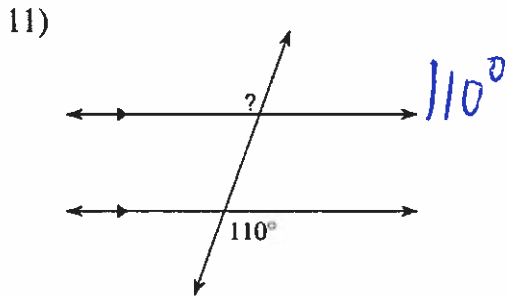


angle alterne externe

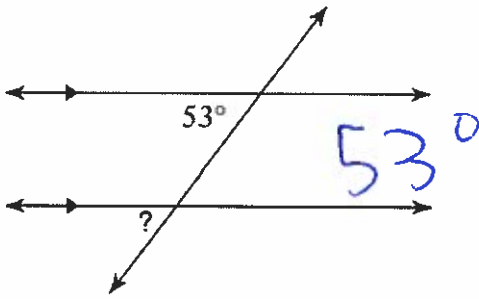
Mathématique Appliquée 30S
Revue Géométrie



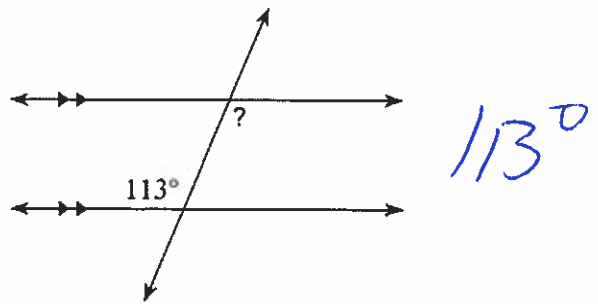
B) Détermine la mesure de chaque angle indiquée.



17)

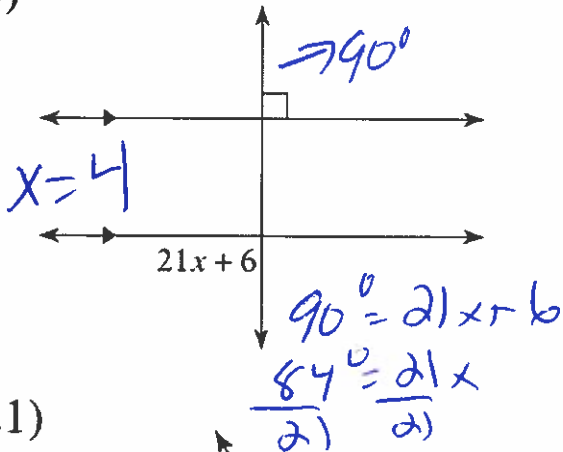


18)

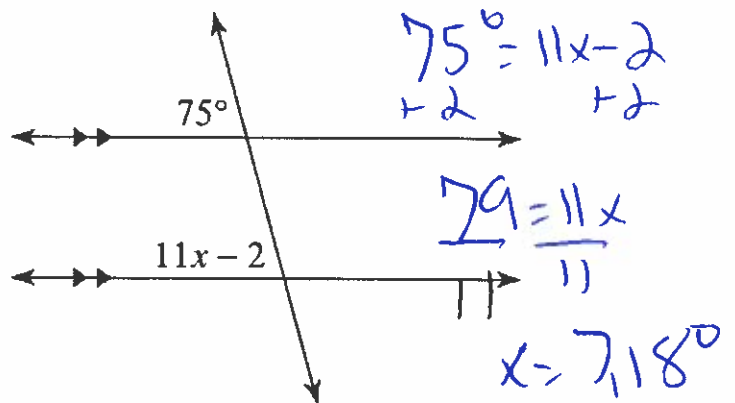


C) Résous pour x.

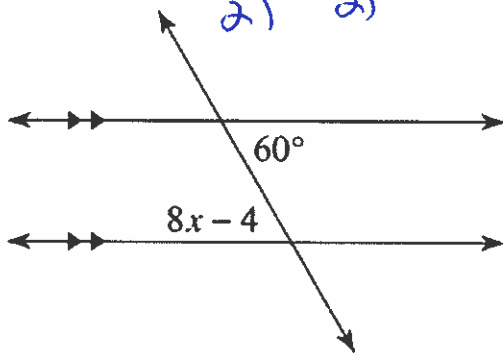
19)



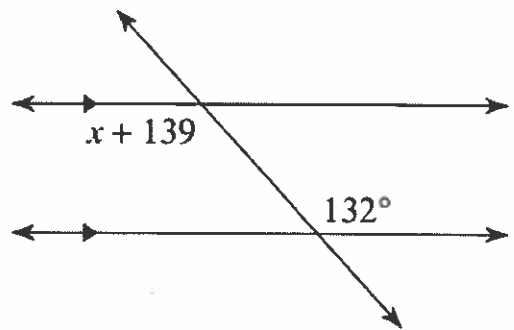
20)



21)



22)



$$60^\circ = 8x - 4$$

$$+4 \quad +4$$

$$64^\circ = 8x$$

$$\frac{64^\circ}{8} = \frac{8x}{8}$$

$$8 = x$$

$$132^\circ = x + 139^\circ$$

$$-139^\circ \quad -139^\circ$$

$$-7^\circ = x$$

23)

$$\begin{array}{r} -1 + 14x = 12x + 17 \\ +1 \quad -12x \quad -12x \quad +1 \\ \hline 2x = 18 \quad x = 9 \end{array}$$

24)

$$\begin{array}{r} 23x - 5 = 21x + 5 \\ -21x \quad +5 \quad -21x \quad +5 \\ \hline 2x = 10 \\ x = 5 \end{array}$$

D) Détermine la mesure de x et la mesure des deux angles.

25)

$x = -6$

$$\begin{array}{r} x + 96 + x + 96 = 180^\circ \\ 2x + 192 = 180^\circ \\ 2x = -12 \\ \frac{2x}{2} = \frac{-12}{2} \end{array}$$

27)

$$\begin{array}{r} 6x = 5x + 10 \\ -5x \quad -5x \\ \hline x = 10 \end{array}$$

26)

$$\begin{array}{r} 180^\circ = 20x + 5 + 24x - 1 \\ 180 = 44x + 4 \\ \frac{176}{44} = \frac{44x}{44} \\ x = 4 \end{array}$$

28)

$$\begin{array}{r} x + 109 + x + 89 = 180 \\ 2x + 198 = 180 \\ -198 \quad -198 \\ \hline 2x = -18 \\ x = -9 \end{array}$$