

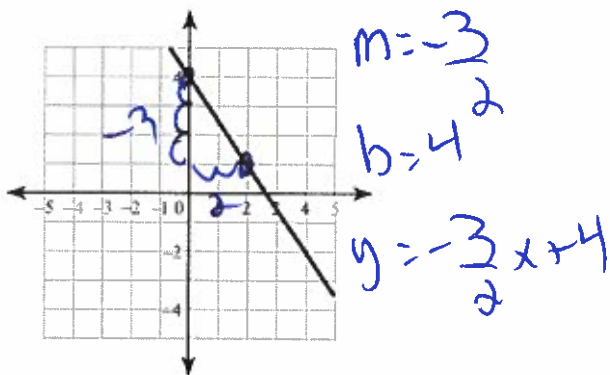
Mathématique Appliquée et Pré-Calcul 20S  
Revue : trouve les équations

Nom : \_\_\_\_\_

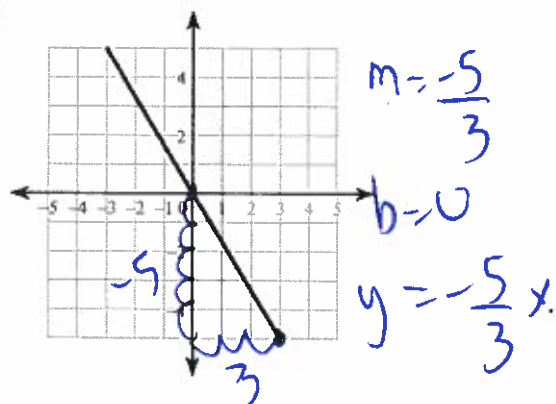
Date : \_\_\_\_\_

A) Trouve les équations explicites des graphiques.

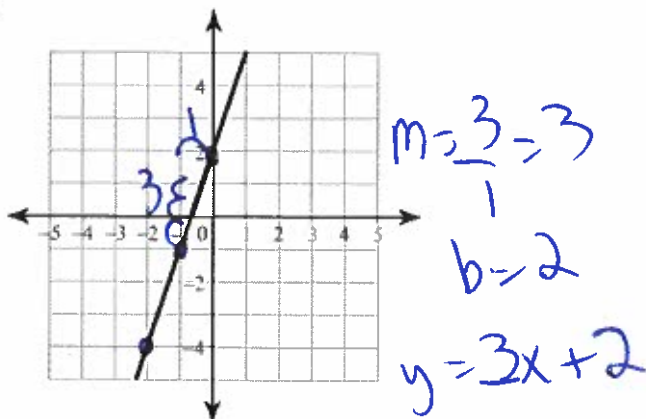
1)



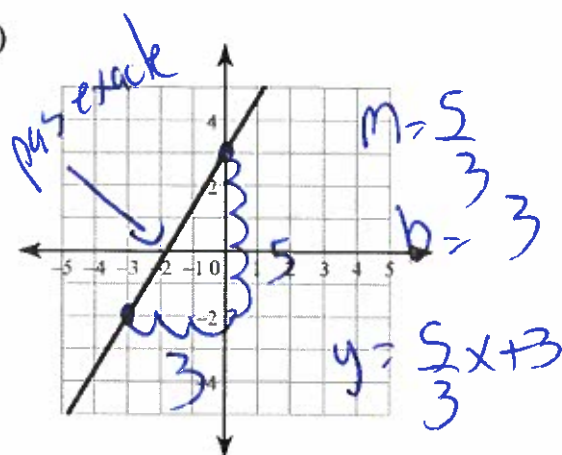
2)



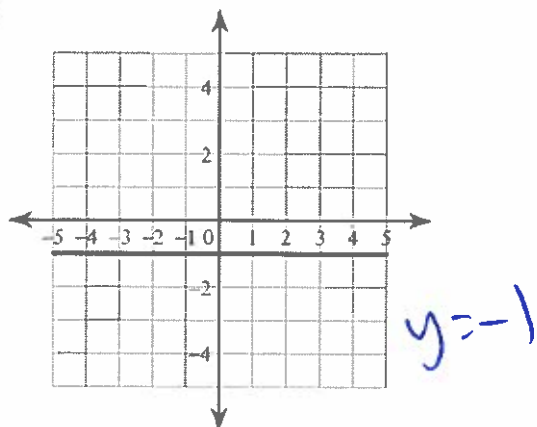
3)



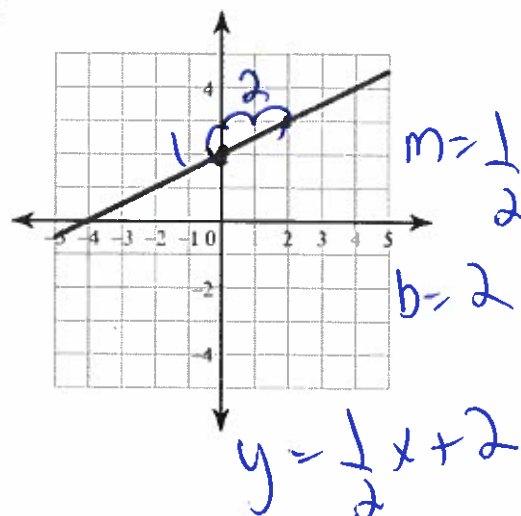
4)



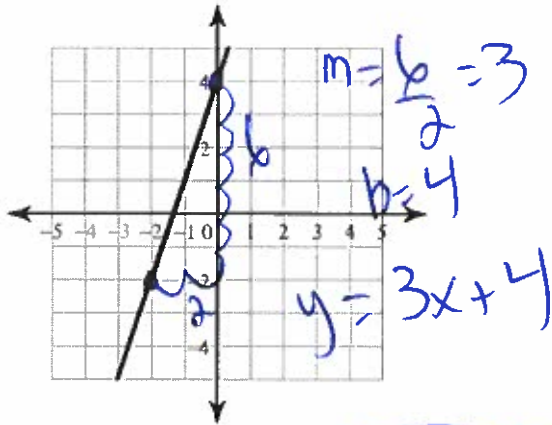
5)



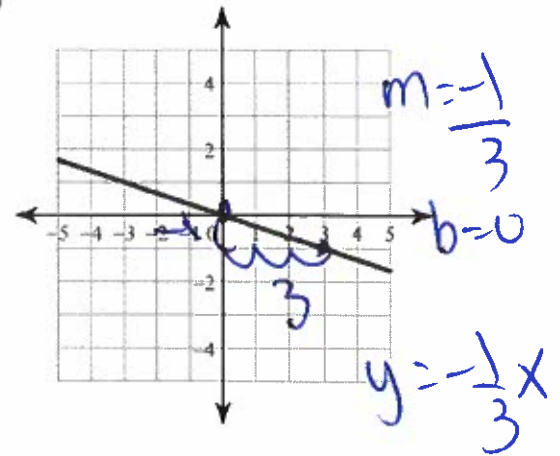
6)



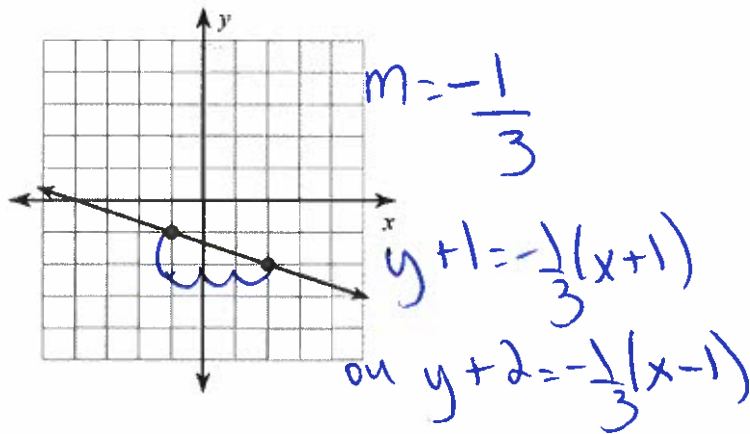
7)



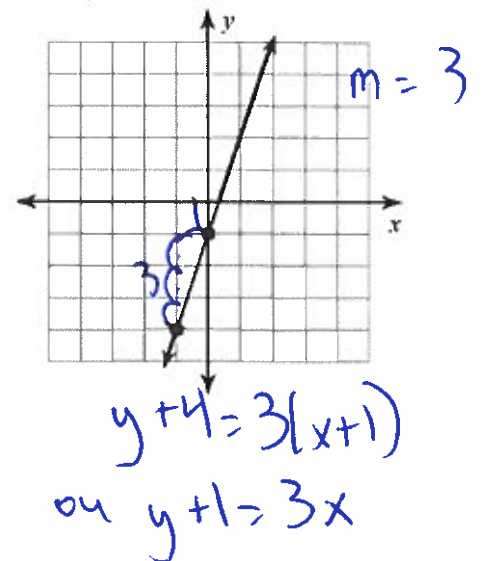
8)

B) Trouve les équations pointe-pente des graphiques.

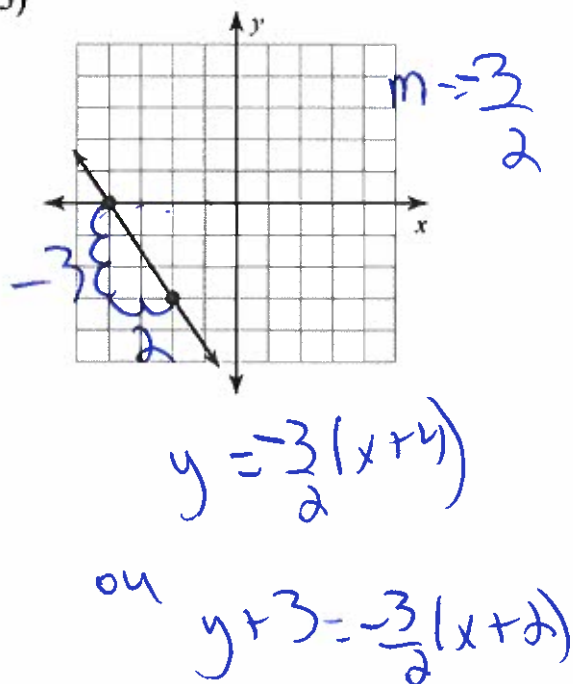
1)



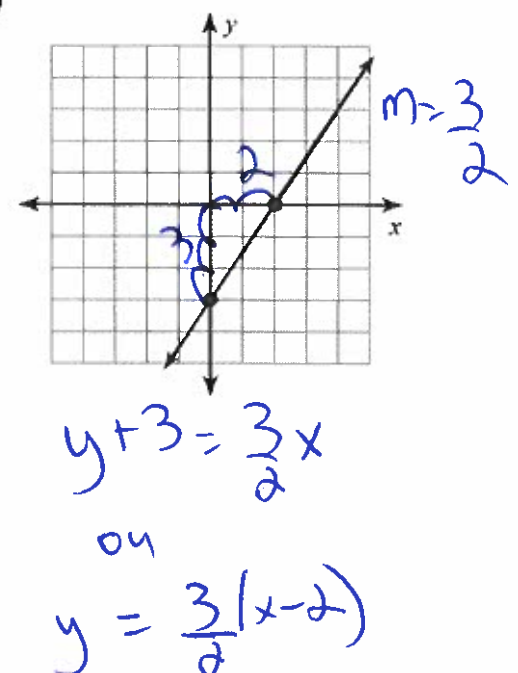
2)



3)

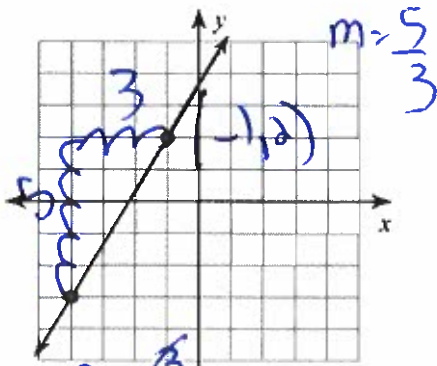


4)



C) Trouve les équations générales des graphiques.

5)



$$y - 2 = \frac{5}{3}(x + 1)$$

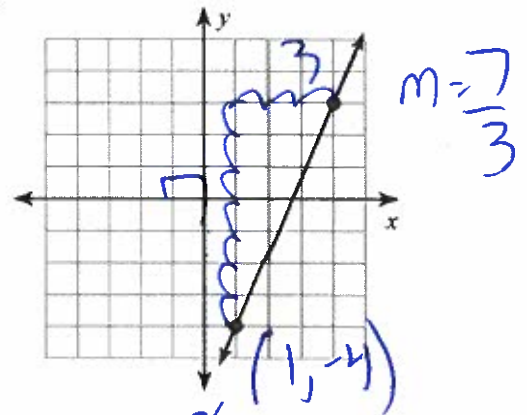
$$3y - 6 = 5(x + 1)$$

$$3y - 6 = 5x + 5$$

$$\begin{array}{r} -3y + 6 \\ -3y + 6 \end{array}$$

$$0 = 5x - 3y + 11$$

6)



$$y + 4 = \frac{7}{3}(x - 1)$$

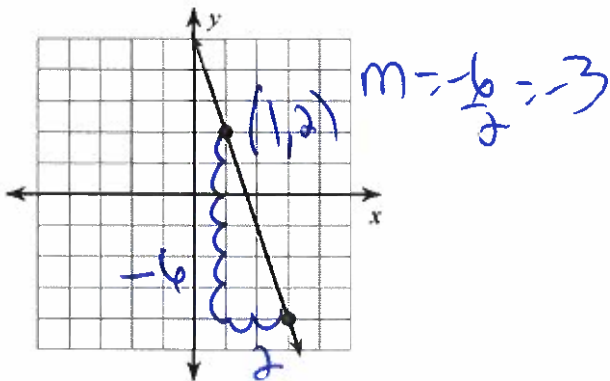
$$3y + 12 = 7(x - 1)$$

$$3y + 12 = 7x - 7$$

$$\begin{array}{r} -3y - 12 \\ -3y - 12 \end{array}$$

$$0 = 7x - 3y - 19$$

7)



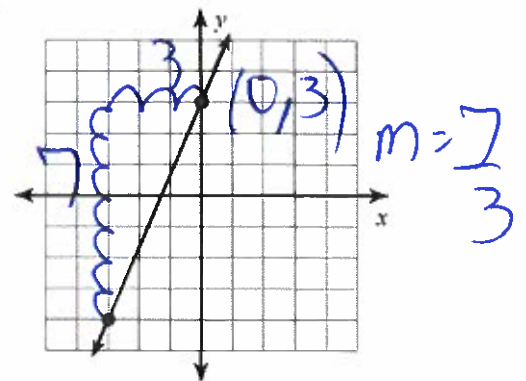
$$y - 2 = -3(x - 1)$$

$$y - 2 = -3x + 3$$

$$\begin{array}{r} +3x - 3 \\ +3x - 3 \end{array}$$

$$3x + y - 5 = 0 \quad \text{ou} \quad 0 = -3x - y + 5$$

8)



$$y - 3 = \frac{7}{3}(x - 0)$$

$$\begin{array}{r} +3 \\ +3 \end{array}$$

$$y = \frac{7}{3}x + 3$$

$$\begin{array}{r} -y \\ -y \end{array}$$

$$0 = \frac{7}{3}x - y + 3$$