

# Lesson 4: Value Handscapes

## Lesson Learning Goal:

The purpose of this task is to teach your to add depth to your drawings by exposing you to various shading techniques.

<https://youtu.be/tOGDmamxQwE>

Values describe the range of light to dark in a given work of art. A value scale is one that shows the change of light to dark and is a good place to start when becoming more comfortable with the mechanics of shading. There are a variety of techniques that can be used to create value in a work of art. The most common techniques are hatching (creating lines in different shades), cross-hatching (creating intersecting lines in different shades), stippling (using dots that are closer together or farther apart to create different shades), and blending (smudging the different shades together so there are no harsh lines).

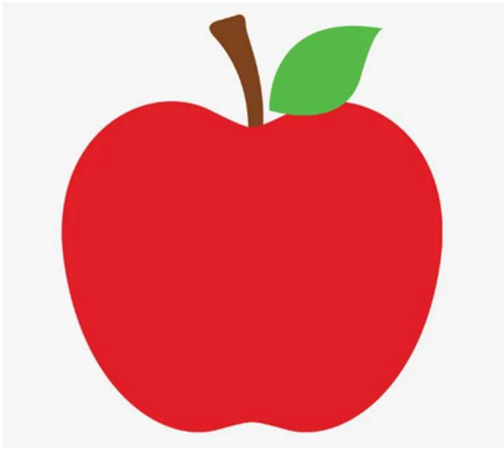
## Compare the 2 apples

Which image are your eyes immediately drawn to?

Why do you think that is?

How are the images different?

What features does the apple on the right possess that the one on the left does not?



### **Activity:**

For this task you will demonstrate your understanding of shades of value by creating a "Handscape." A handscape is a work of art in which realistic hand drawings are combined in a fantasy landscape. Begin by selecting a specific landscape or scene you would like to draw. Consider how you might creatively incorporate your hand(s) into this portrait. Study your hand as you incorporate it into your drawing, making sure to include all of the natural ridges, lines, and shades of value that you see. Complete the rest of your portrait by adding in scenic details. For a realistic look try to apply various shading techniques.

- The process of art is just as important as the final product. Once you're halfway done, share your work with a peer who can ask questions about the intention behind the composition and offer you some strategies to help complete it to the best of your abilities. Being able to analyze and critique art (in a respectful way) is another great skill that we want you to work on in addition to developing your artistic abilities

## Elements of Art

# VALUE

How light or dark the shade  
or colour can be

### Value Scale

Shows the range from light to dark



### Shading

Applied to objects to show depth

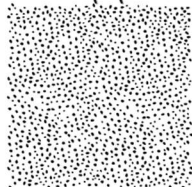


### Shading Techniques

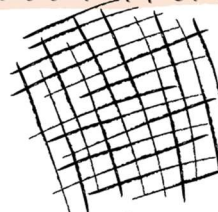
#### Hatching



#### Stippling

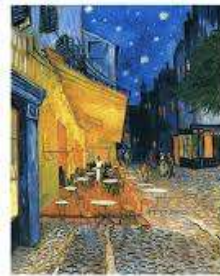
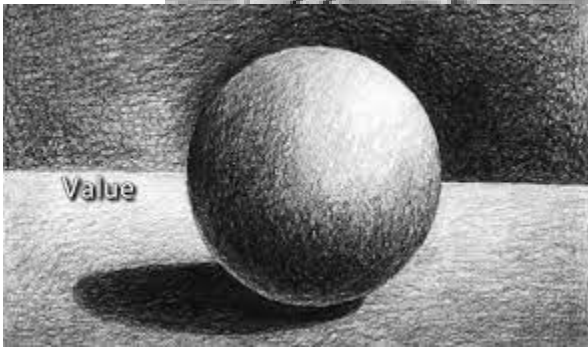


#### Cross-hatching



#### Blending





### Success Criteria:

- Include realistic details in hand drawing that create depth
- Space: fill the page with scenic details
- Use a variety of shading techniques

# Rubric

## Handscapes

	<b>Level 1</b>	<b>Level 2</b>	<b>Level 3</b>	<b>Level 4</b>
Shading Techniques	<p>Included very few shades of value ranging from dark to light.</p> <p>Minimal transition between values.</p> <p>Used one shading technique.</p>	<p>Included some shades of value ranging from dark to light.</p> <p>Some transition between values.</p> <p>Used few shading techniques.</p>	<p>Included different shades of value ranging from dark to light.</p> <p>Created a smooth transition between values.</p> <p>Used different shading techniques.</p>	<p>Included many shades of value ranging from dark to light.</p> <p>Created a smooth transition between values.</p> <p>Used a wide variety of shading techniques.</p>
Use of space	<p>Objects need to be more balanced and to use the space more effectively.</p>	<p>Somewhat balanced.</p> <p>Filled the page somewhat well.</p>	<p>Balanced landscape.</p> <p>Utilized space well.</p>	<p>Achieved balance and utilized space on paper excellently.</p>
Application	<p>More planning and thought is required for this composition.</p>	<p>The composition has some indication of planning and thought.</p>	<p>This is a well planned and well thought out art composition.</p>	<p>This is a carefully planned and extremely well thought out art composition.</p>